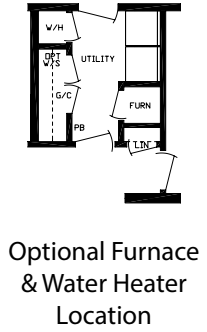
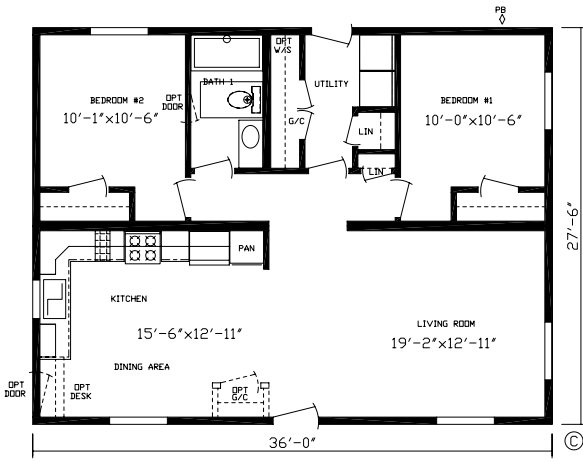


# Northern Advantage Modular

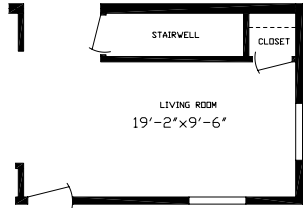


**FRIENDSHIP HOMES**

Modern Designs at Affordable Prices



Optional Furnace & Water Heater Location



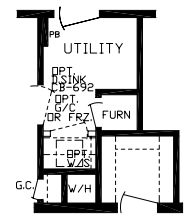
Optional Stairway Location

# The Akron Modular

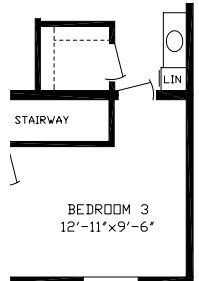
Model # 160020M  
(3628 2BR 1BA)  
Square Feet: 990

# The Roaring Brook Modular

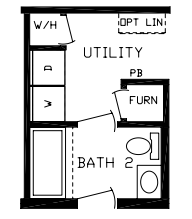
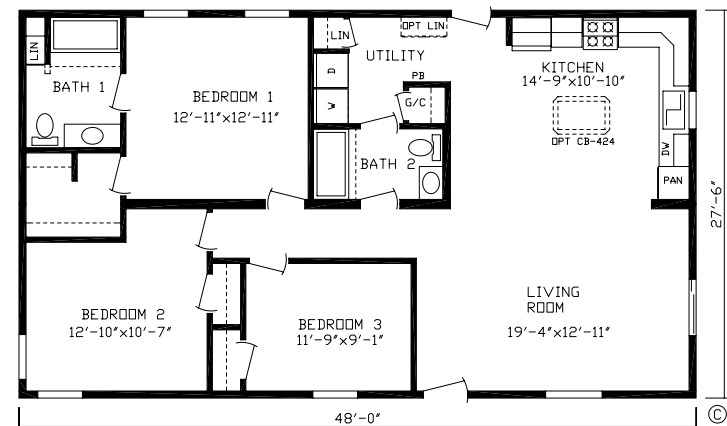
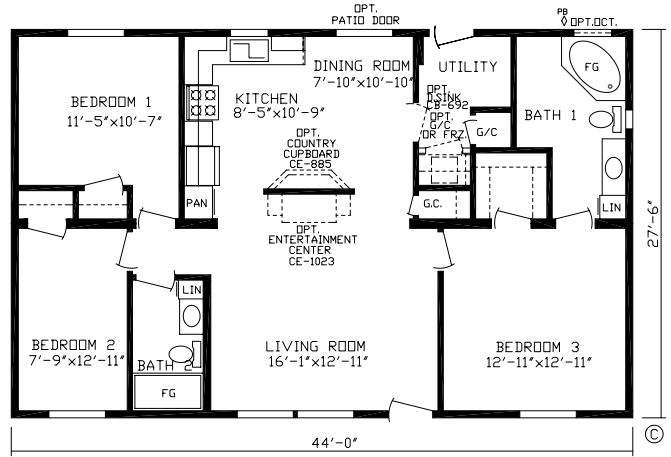
Model # 160001M  
(4428 3BR 2BA)  
Square Feet: 1210



Optional Furnace & Water Heater Location



Optional Stairway Location



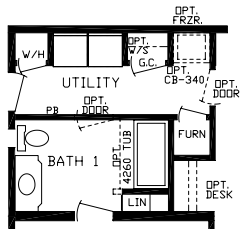
Optional Furnace & Water Heater Location

# The Millbrook Modular

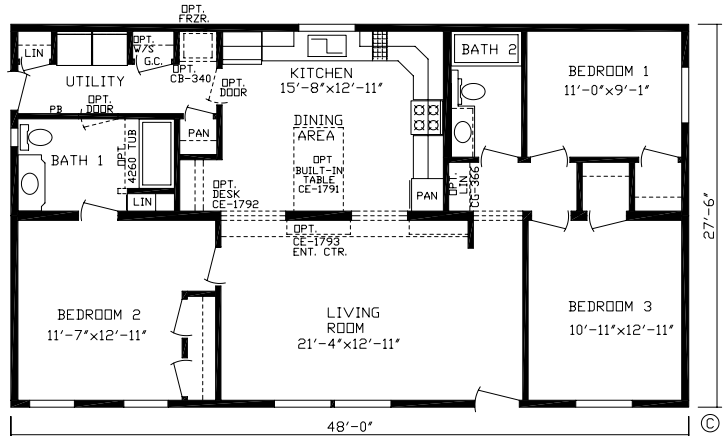
Model # 160021M  
(4828 3BR 2BA)  
Square Feet: 1320

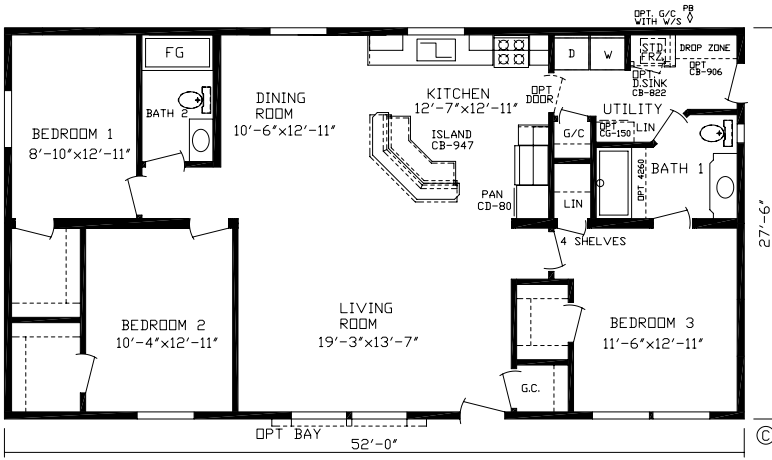
# The Entertainer Modular

Model # 160022M  
(4828 3BR 2BA)  
Square Feet: 1320



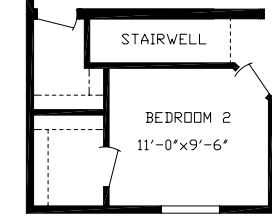
Optional Furnace & Water Heater Location





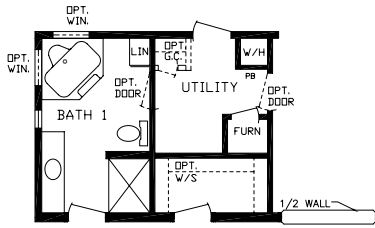
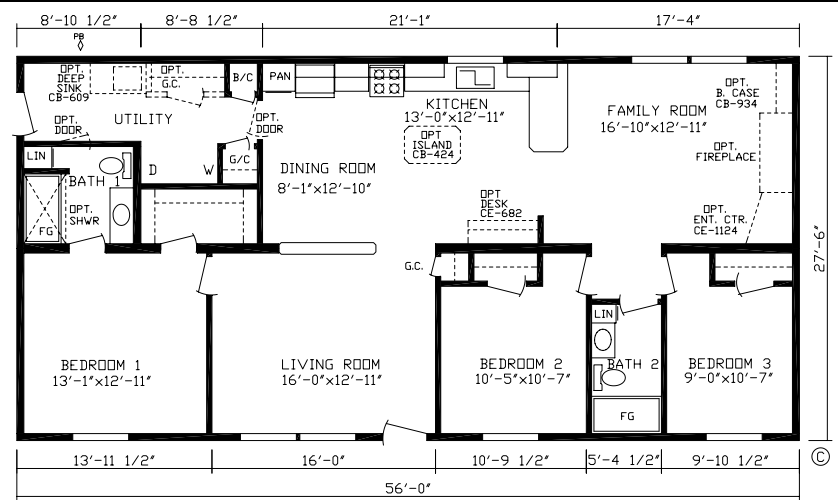
# The Stoneybrook Modular

**Model # 160011M**  
 (5228 3BR 2BA)  
 Square Feet: 1430

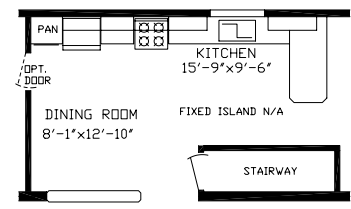


# The Curryview Modular

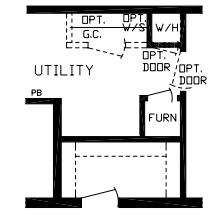
**Model # 160002M**  
 (5628 3BR 2BA)  
 Square Feet: 1540



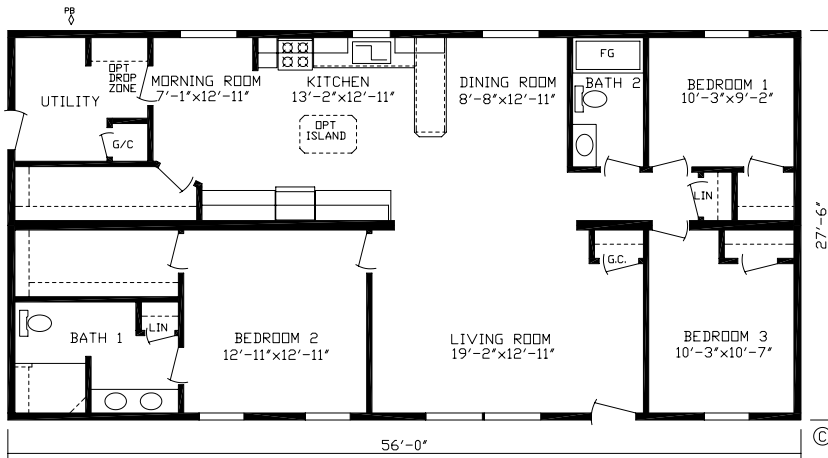
Room Option RO-4740



Optional Stairway Location

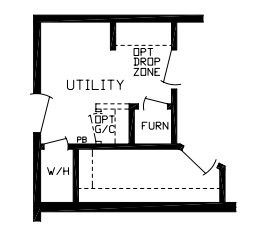


Optional Furnace & Water Heater Location

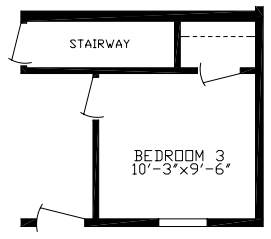


# The Huntington Modular

**Model # 160007M**  
 (5628 3BR 2BA)  
 Square Feet: 1540



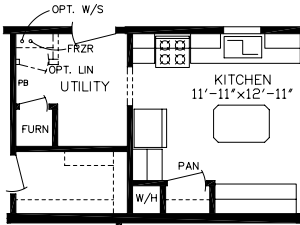
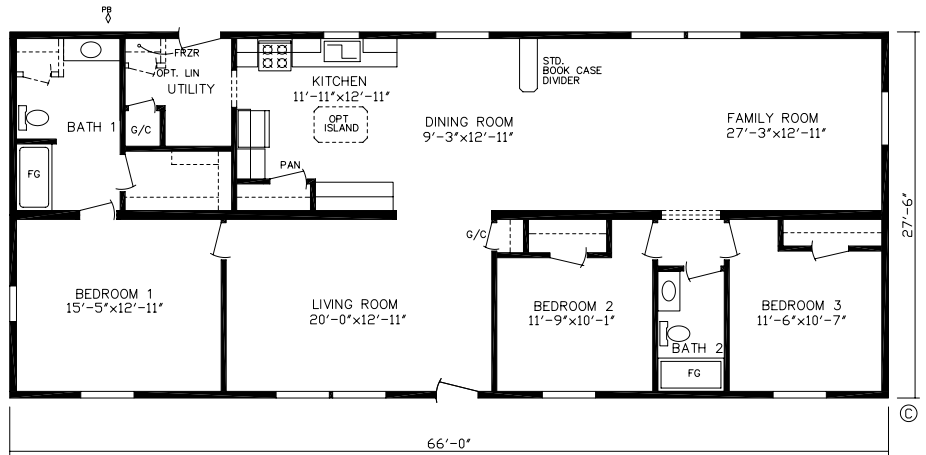
Optional Furnace & Water Heater Location



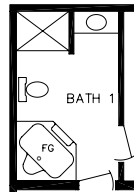
Optional Stairway Location

# The Independence Modular

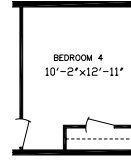
Model # 160000M  
 (6628 3BR 2BA)  
 Square Feet: 1815



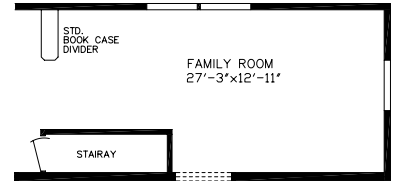
Optional Furnace & Water Heater Location



Optional Glamour Bath RO-4741M



Optional 4th Bedroom RO-4742M



Optional Stairway Location

## Northern Advantage Modular Standards

### General:

Open Joist floor System  
 3/4" Floor Decking  
 Double Rim Joist  
 8' Sidewall Height w/Flat Ceilings  
 3/12 Roof Pitch-28' Wides  
 5/12 Roof Pitch-32' Wides  
 60lb Ground Snow Load  
 2x4 Marriage Walls

### Furnace:

Return Air Grills Installed

### Carpet:

Standout Carpet w/Tack Strip  
 Standard Foyer  
 5lb Carpet Pad  
 DiamondFlor Roll Goods

### Electric:

GFI Recept Kitchen & Baths  
 Exterior Recept Front & Rear Doors  
 Ceiling Lights in all Bedrooms  
 Wire/Vent for Dryer  
 200 Amp Service  
 Glass Globes & Shades  
 Rocker Style Light Switches  
 Ceiling Light w/Switch Walk-In Closets  
 Porch Light at Front & Rear Door

### Plumbing:

Water Lines Complete  
 Plumb for Washer  
 Single Lever Kitchen Faucet  
 Stainless Steel Kitchen Sink  
 Moen Faucets  
 Water Inlet Shut Off Valve

### Baths:

Exhaust Fan w/Light Master Bath  
 Porcelain Lavs  
 Fiberglass Tubs

### Insulation:

2x6 Sidewalls w/R-19  
 R-44 Insulation in Roof

### Cabinetry:

Wrapped Cabinets Doors & Stiles  
 Shelf over Refrigerator  
 Center Shelf in Kitchen Base Cabinets  
 Cove Molding on Kitchen Overhead Cabinets  
 Brushed Nickel Hardware  
 Self- Edge Countertops

### Décor:

Stipple Ceiling  
 Venetian Blinds T/O  
 Harmony Drap Package  
 Full Finished Drywall T/O - Includes All Closets  
 Wrapped Trim

### Exterior:

Energy Seal Wind Wrap  
 Vinyl Siding  
 7/16" OSB Sheathing  
 Ridge and Eave venting  
 19" Eave-28' Wide-Std.  
 15" Eave-32' Wide-Std.  
 18" On Gable Ends  
 Owens Corning 25 Year Shingles-28' Wides  
 Owens Corning 30 Year Arch Shingles-32' Wides

### Doors:

34x82 9-Lite Rear Door w/ Storm  
 38x82 Decorator Front Door w/ Storm  
 Keyed Alike Locksets

### Windows:

Kinro Thermopane Low E Vinyl  
 (Pella Windows Optional)